

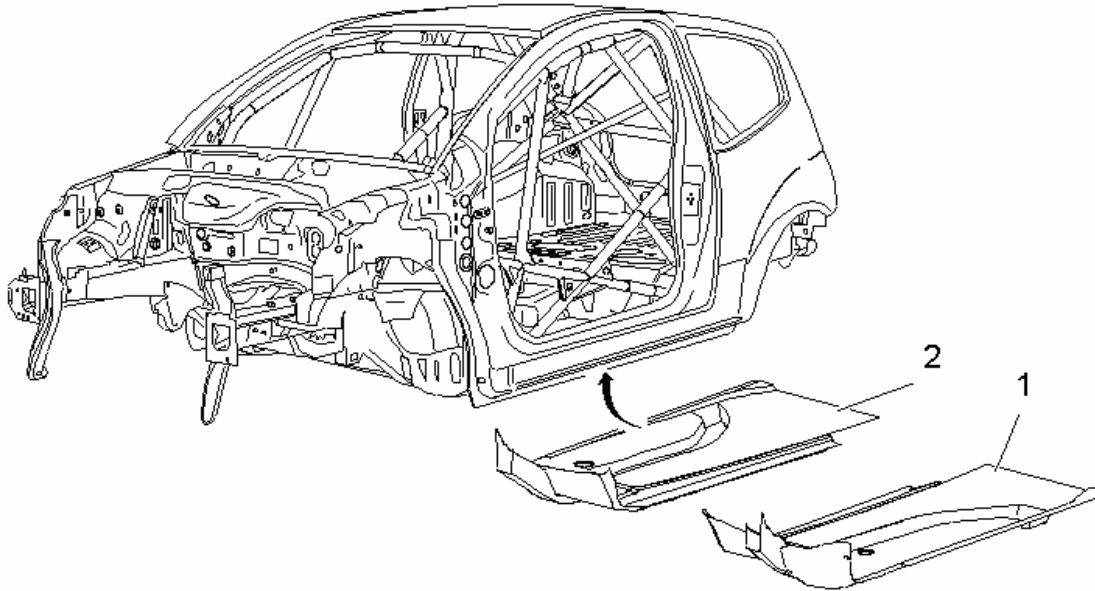


**C2 R2 MAX**

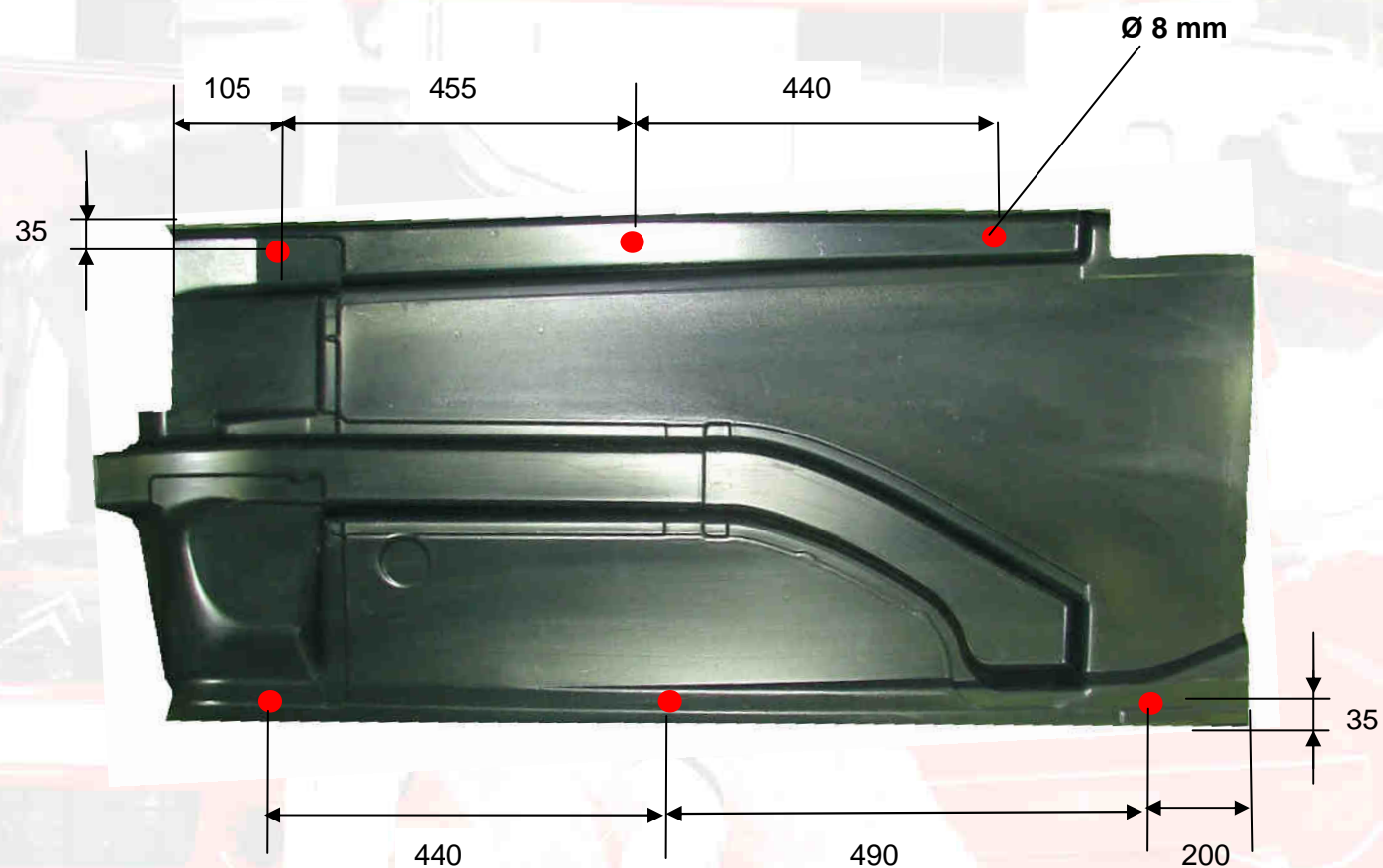
Version 02 - 02 April 2009

**R6C**

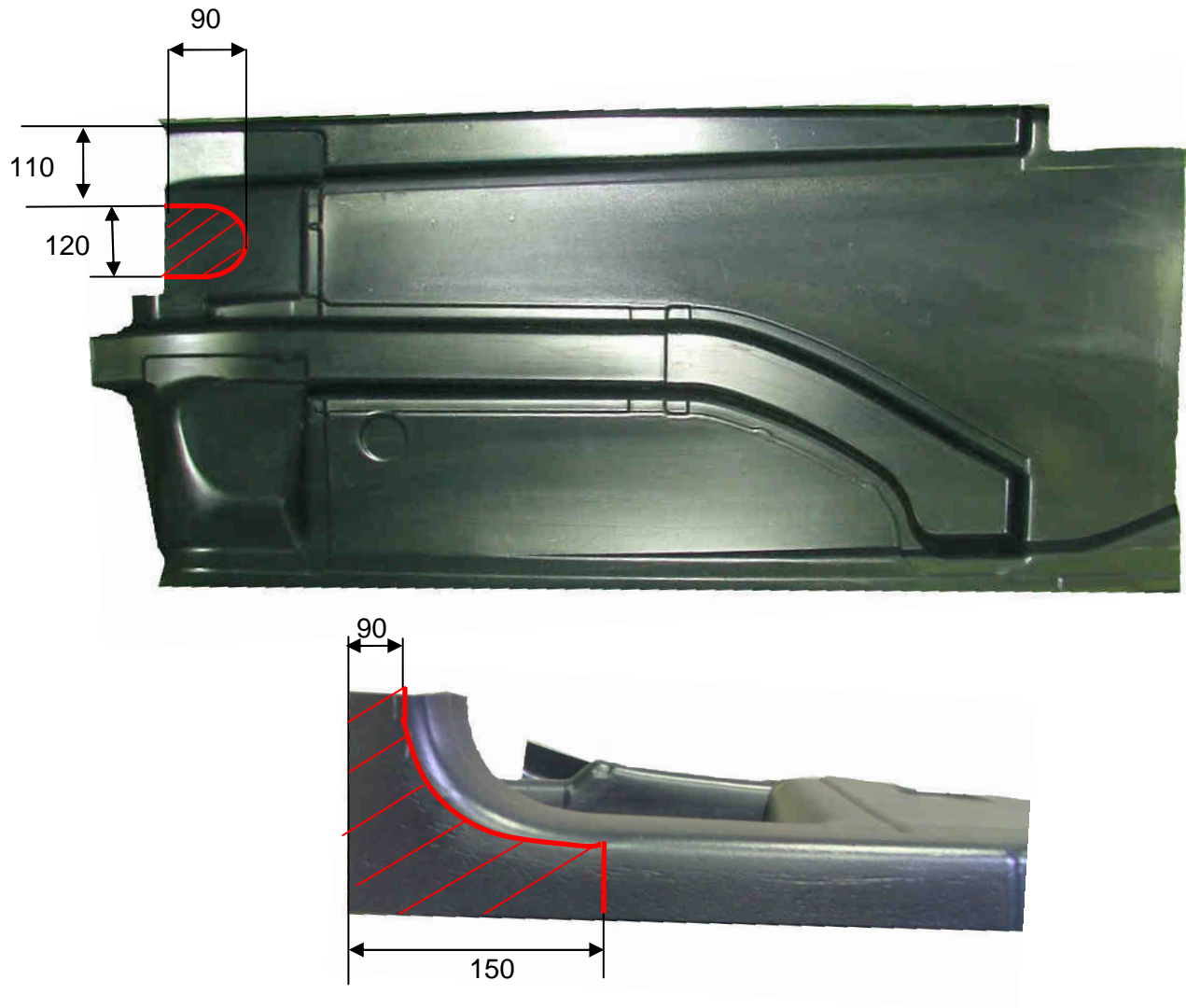
# ***UNDER BODY PROTECTIONS***

[illegible]

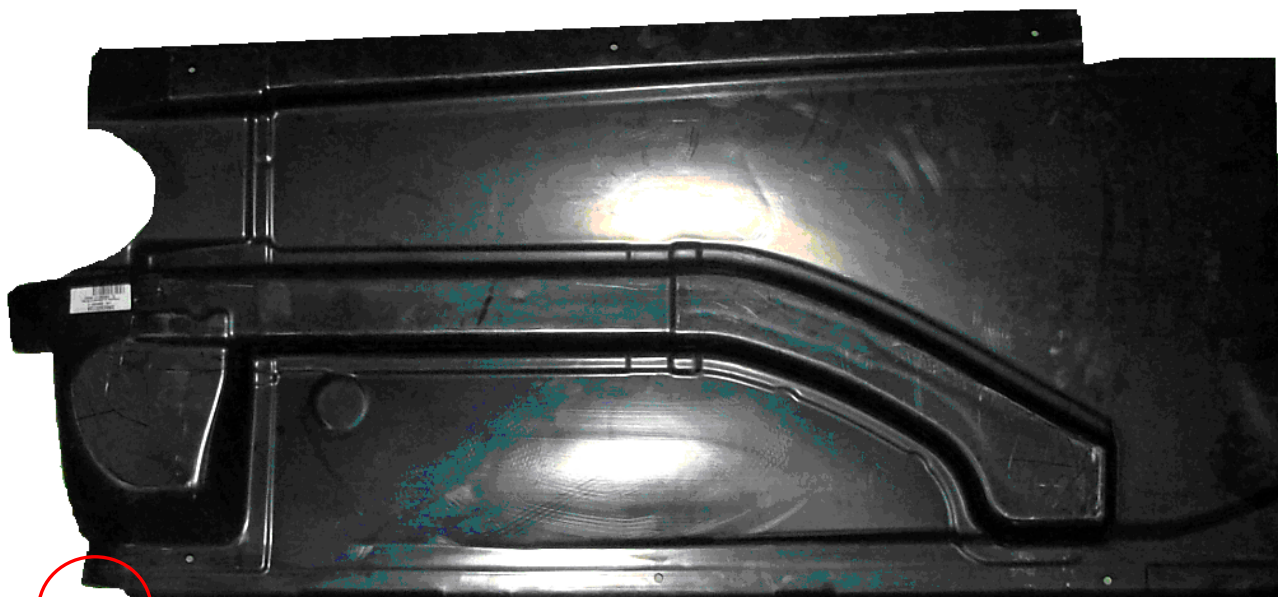
Drill the under body protections with a  $\varnothing 8 \text{ mm}$  drill, at the positions shown below:



Make the cut-outs shown below:



Final result for the protection:



**R**  
**Under body**  
**protections**



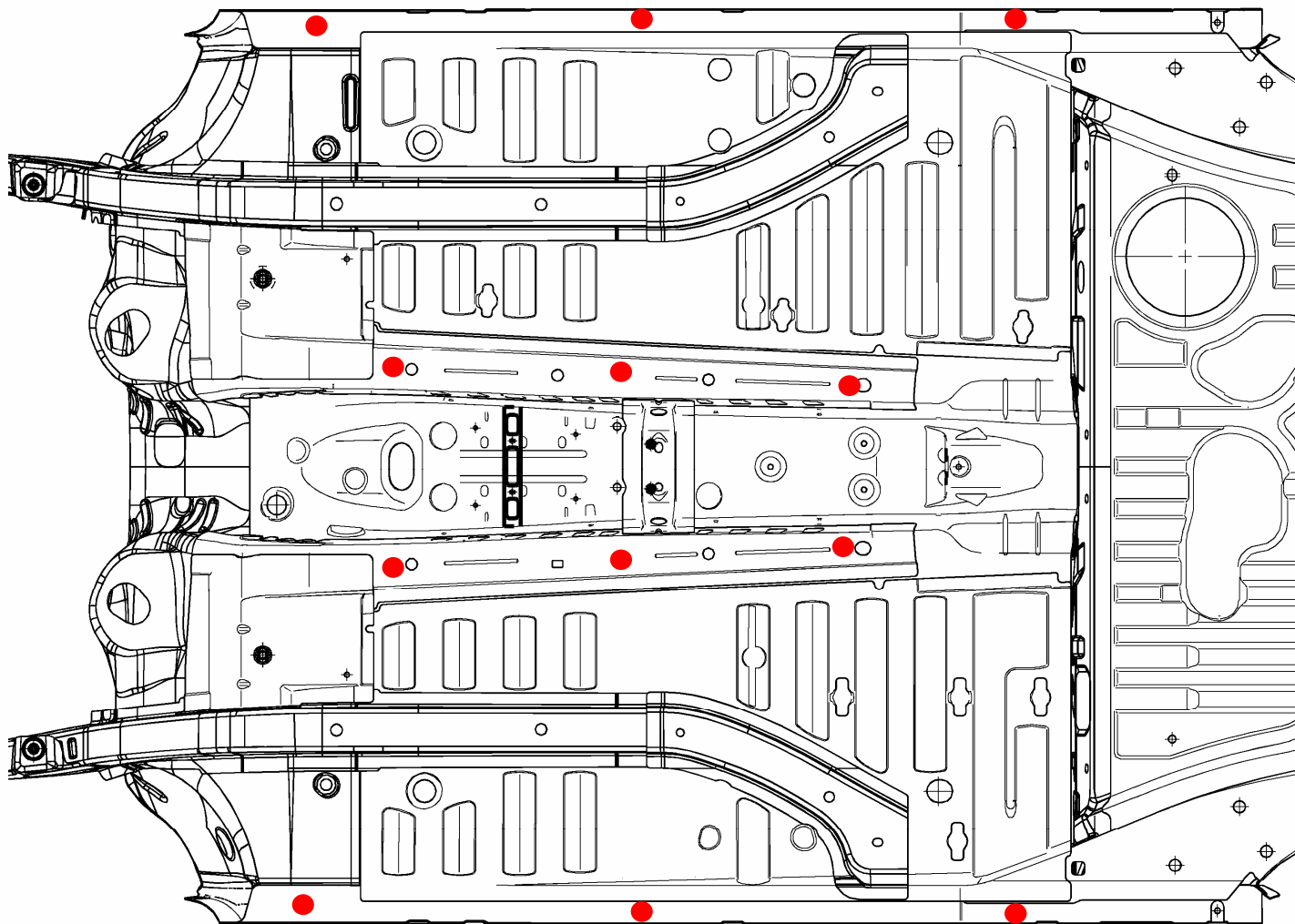
**R**  
**BODY**



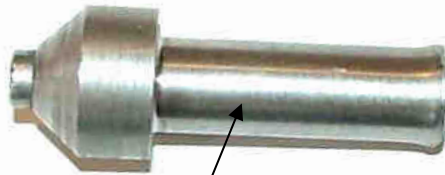


Position the prepared protections on the body and counterdrill the holes already done in the protections to  $\varnothing$  8 mm.

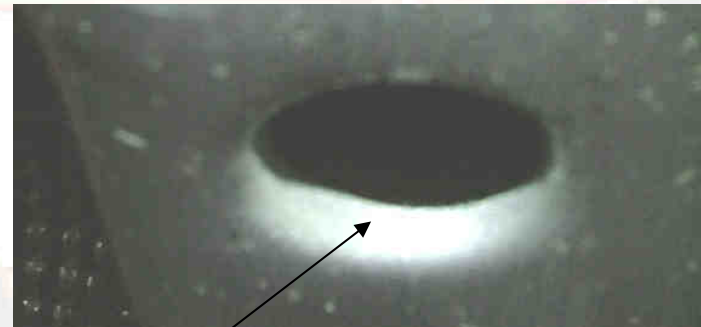
Then remove the protections, and drill all the holes again to  $\varnothing$  10 mm.



Using a forming tool, prepare the  $\varnothing 10$  mm holes as shown in the photo below:



Forming tool



Shape to be produced

Weld the M6 collar nuts (ref PR **87 1832**) in the positions provided for this, as shown in the photo below:



87 1832



Welded nut

**R**  
Under body  
protections



**R**  
BODY



Position the prepared protections on the body, and fix them using a **BHC M6 L15** screw.

**N.B.:** certain parts may need some additional cutting out.



**Finishing the assembly:** In some areas there may be slight “gaps” between the protections and the body. Fill these spaces in with foam, and then seal them with a strip of silicon seal.

